

Quick Setup Guide for Two Line FWP w_Wifi AP

1. Two Line FWP (Fixed Wireless Phone) w_Wifi AP Packing List :

Before you start installing the Two Line FWP w_Wifi AP, please verify that the package contains the following items:

- One Set of Two Line FWP w_Wifi AP,
- 1x RJ-45 Network Cable, 1x RJ-11 Phone Cable,
- 1x 3G Antenna,
- 1x Power Adapter,
- CD with User's Manual,
- This Quick Setup Guide



NOTE: Please notify your sales representative immediately if any items listed above is missing or damaged.

2. Hardware Connection Settings

- 1) Connect the 3G antenna to this AP.
- 2) Insert the SIM card to this AP.
- 3) Connect the PSTN line to the FXO port of this AP.
- 4) Connect the power adapter to this AP.
- 5) Connect a PC to the LAN port of this AP to proceed to its software settings. (Please refer to Section 3)



NOTE 1: You can use the SIM card only or you can also connect DSL to the WAN port of this AP for load balancing.



NOTE 2: For additional phone set, you can connect up to 3 sets of dual line phone in parallel with the FXS port of this AP via the RJ11 cable.

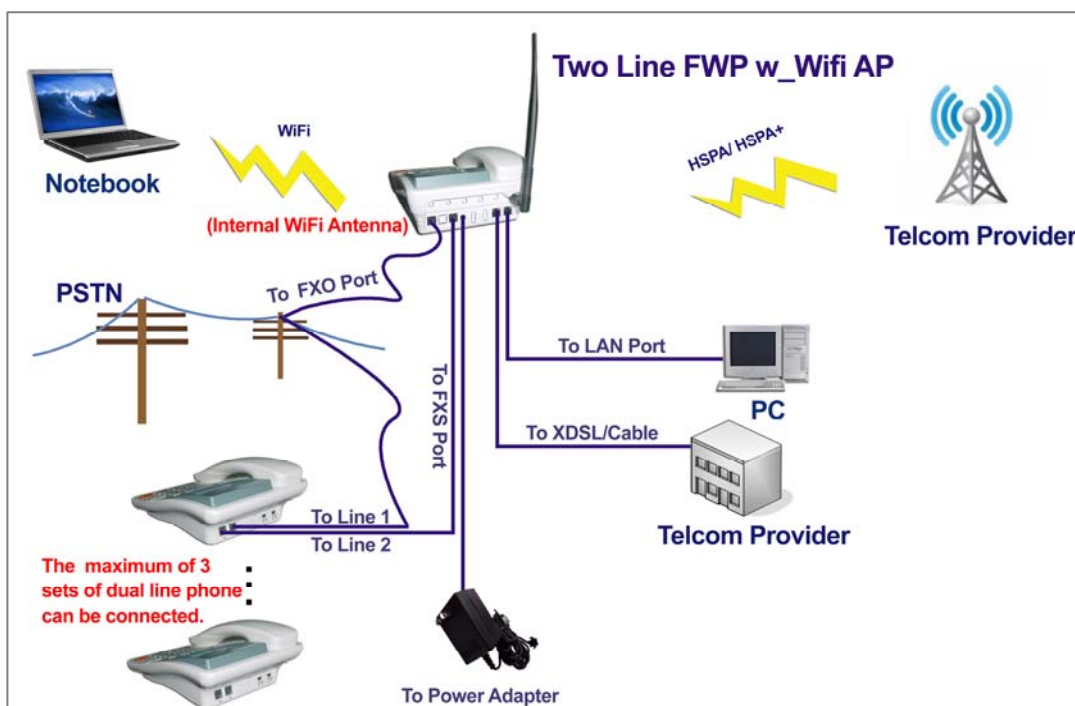


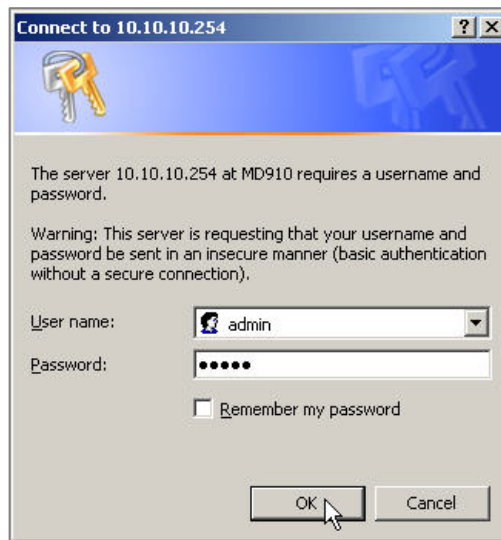
Fig.1 The Connection of Two Line FWP w_Wifi AP

3. Software Connection Settings

Refer to the following sections to set up this AP. Before the setup, please confirm that the LAN port of the AP has been connected with the PC via RJ-45:

- **Set up 3G Settings for the Two Line FWP w_Wifi AP**

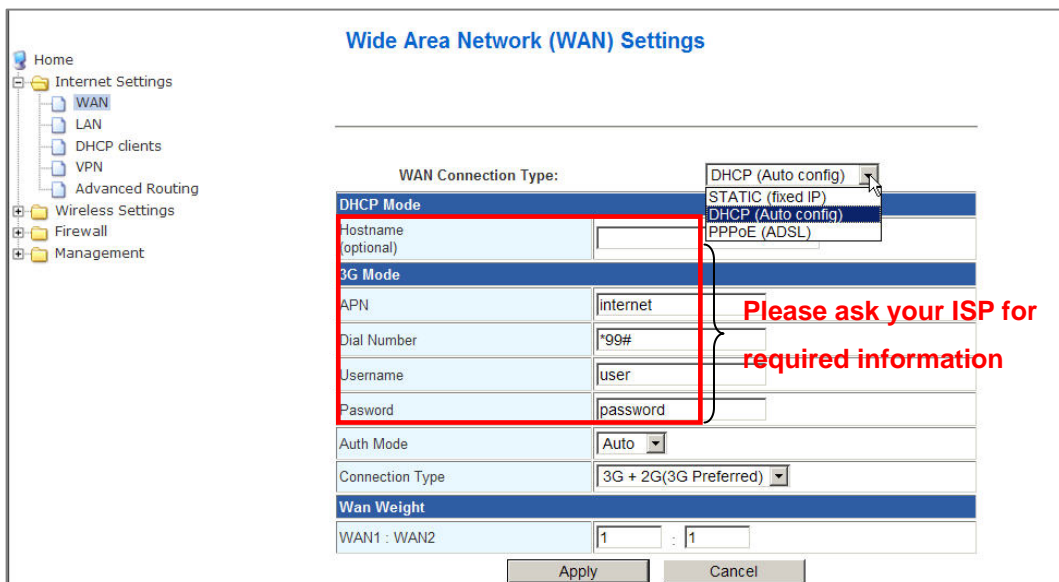
1. Please connect your computer to this AP's LAN port.
2. Initiate your Internet Explorer, and type in the address "10.10.10.254"
3. Please input "admin" as the user name and the password. Click **OK** button to enter AP's setup page.



4. Once you are in the setup page, please select "Internet Settings" and enter "WAN" section of the setup.
5. In the WAN MODE SETTINGS, please select the desired WAN connection type and require the necessary information from your ISP once the WAN port of your Two Line FWP w_Wifi AP is configured.
6. As to 2G/3G ISP SETTINGS, please also contact your ISP for the dialup settings. User must enter **Access Point Name (APN), Dial Number, Username and Password**.



NOTE: The user must enter the PIN code by clicking on the Management / SIM function if you had set up before for the SIM card.



Wide Area Network (WAN) Settings

WAN Connection Type: DHCP (Auto config)

DHCP Mode: DHCP (Auto config)

3G Mode:

APN	internet
Dial Number	*99#
Username	user
Pasword	password

Auth Mode: Auto

Connection Type: 3G + 2G(3G Preferred)

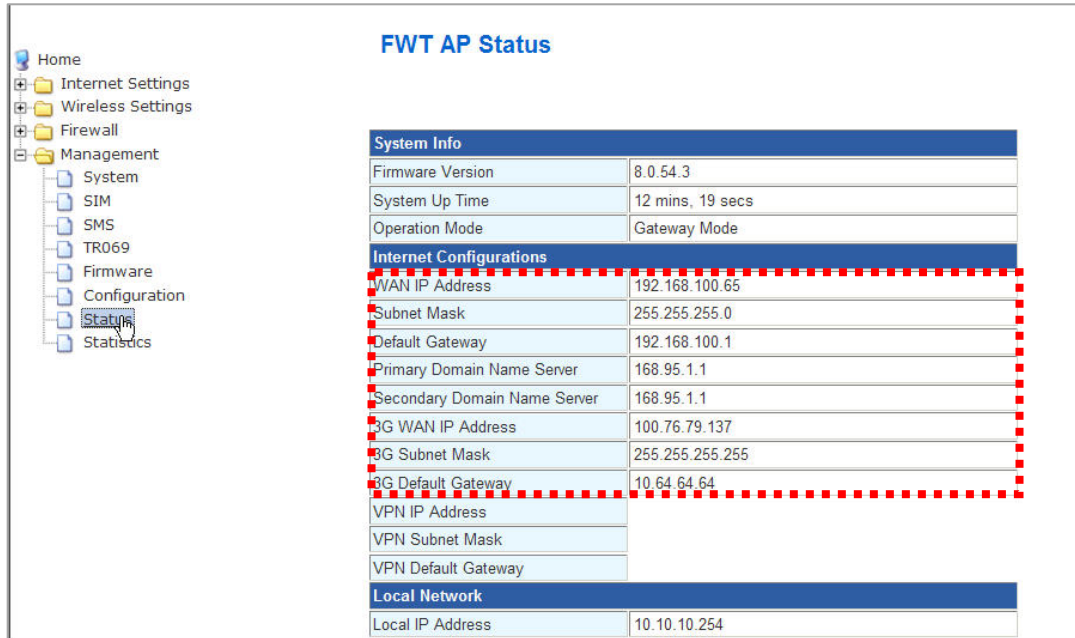
Wan Weight:

WAN1 : WAN2	1	:	1
-------------	---	---	---

Please ask your ISP for required information

Apply Cancel

7. Click on **Apply** after completing the setup. Wait 30 seconds around to have the new settings taken effect.
8. You can check if this AP is online by clicking on the **Management / Status** function. The information should be displayed under the **Internet Configurations** section.



System Info	
Firmware Version	8.0.54.3
System Up Time	12 mins, 19 secs
Operation Mode	Gateway Mode
Internet Configurations	
WAN IP Address	192.168.100.65
Subnet Mask	255.255.255.0
Default Gateway	192.168.100.1
Primary Domain Name Server	168.95.1.1
Secondary Domain Name Server	168.95.1.1
3G WAN IP Address	100.76.79.137
3G Subnet Mask	255.255.255.255
3G Default Gateway	10.64.64.64
VPN IP Address	
VPN Subnet Mask	
VPN Default Gateway	
Local Network	
Local IP Address	10.10.10.254

4. Restore Factory Default Settings

Two Line FWP w_Wifi AP provides a “RESET” button that will be easy for users to reset the AP to default. The button is located at the side panel of the AP (See the figure below). Reset steps are as follows:

- (1) Press the **RESET** button 2 seconds around.
- (2) All LEDs on the rear panel will flash 5 times.
- (3) The AP will start to reboot.



NOTE: Disconnecting the power before resetting (which takes about 60 seconds) is complete might permanently destroy the firmware. In this case of a damaged firmware, the unit will need to be replaced by customer service.