

3JTech PP22-5600 TTL/RS232

User's Manual & Programming Guide

Revision 1.1

**3J Tech Co., Ltd.
342 Fu-Hsing N. Rd., 2F
Taipei, Taiwan
Tel: +886-2-2500 6916
info@3jtech.com.tw**

**3JTech (A3J Eng.), Inc.
15344 E. Valley Blvd., Suite C
City of Industry, CA 91746 USA
Tel: 1-626-934 7600
info@3jtech.com**

Revision History

Revision	Date	Changes
1.0	Oct 21,2002	First Release / Kiwi Huang
1.1	Oct 29,2002	Connector definition.

Related Documents or Files

- 1) SI3034 silicon DAA data sheet
- 2) IP568x –DS-P02-010815 modem chip set data sheet
- 3) PP22-5600 AT command sets..

Table of Contents

General Description

Application

Specification

Connector definition

Mechanical Drawing

Schematic

.

.

General Description

The PP22-5600TTL is a highly integrated, low-cost, high performance, and low-power dissipation modem module. This module implements V.90 to achieve Internet connection rates up to 56Kbps, supporting existing V.34 data mode, Class 1 FAX mode. provide a TTL level serial interface for connecting to DTE terminal and provide reliable connection with connection rate ranging from 300bps up to 115200bps

Application

Stand-alone modem

Set-top box.

Internet Access.

Remote Access and control.

Fax server.

Specification

- . Data mode capabilities:
 - . ITU-T V.90
 - . ITU-T V.34
 - . ITU-T V.32bis, V.32
 - . ITU-T V.22bis, V.22
 - . ITU-T V.23, V.21
 - . Bell 212
 - . Bell 103
- . FAX mode capabilities:
 - . ITU-T V.17, V.29, V.27ter, and V.21 Ch 2
 - . TIA/EIA 578 class 1 FAX
 - . V.42 error correction (LAPM and MNP)
 - . V.42bis and MNP class 5 data compression
 - . World wide call progress tone detection
- . Operating system support: DOS, Windows 95, Windows 98, Windows NT, Windows ME and Windows 2000
- . TIA/EIA 602 standard for AT command set
- . DTE speed up to 115200

Connector Definition

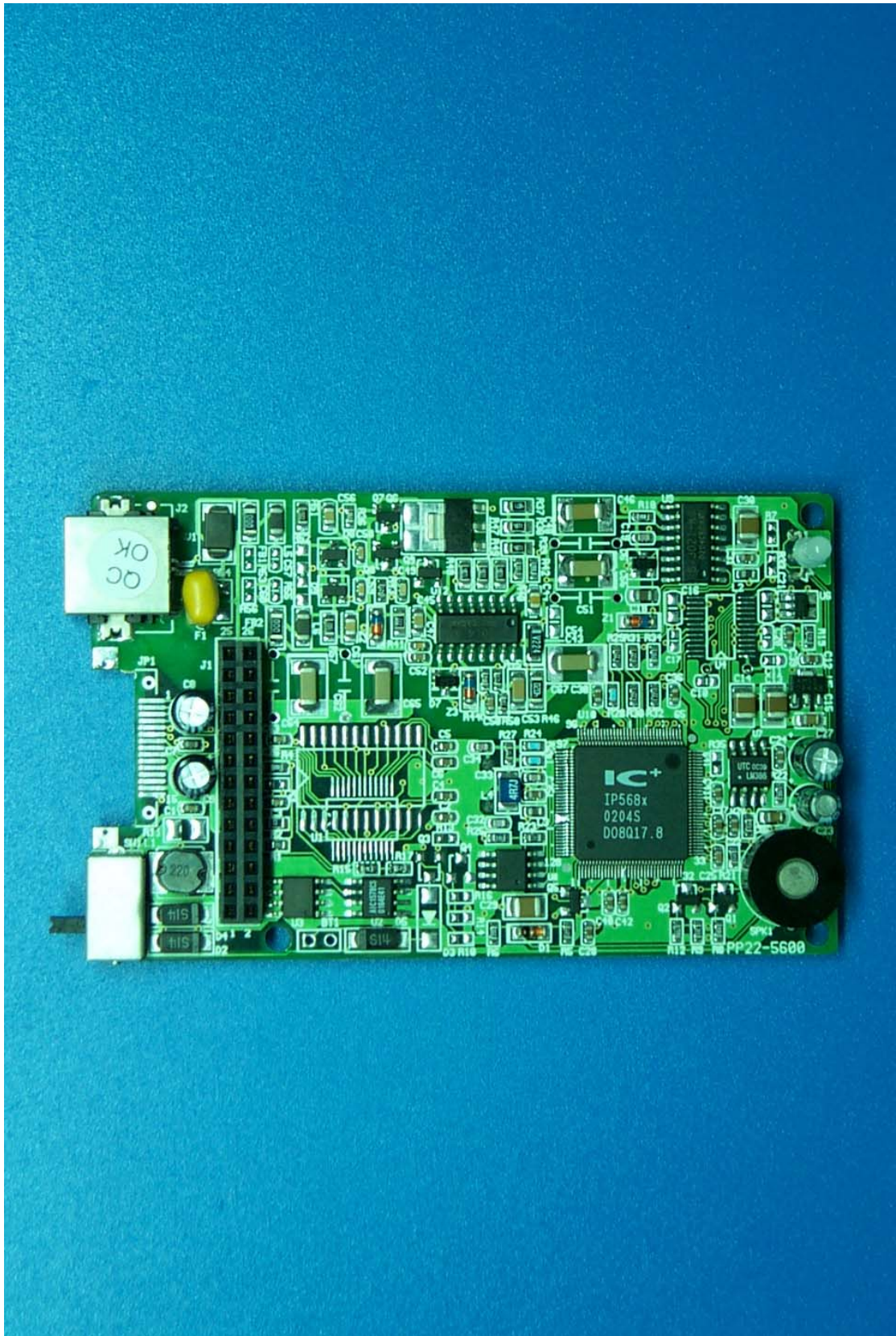
Honda 15pin RS-232 interface.

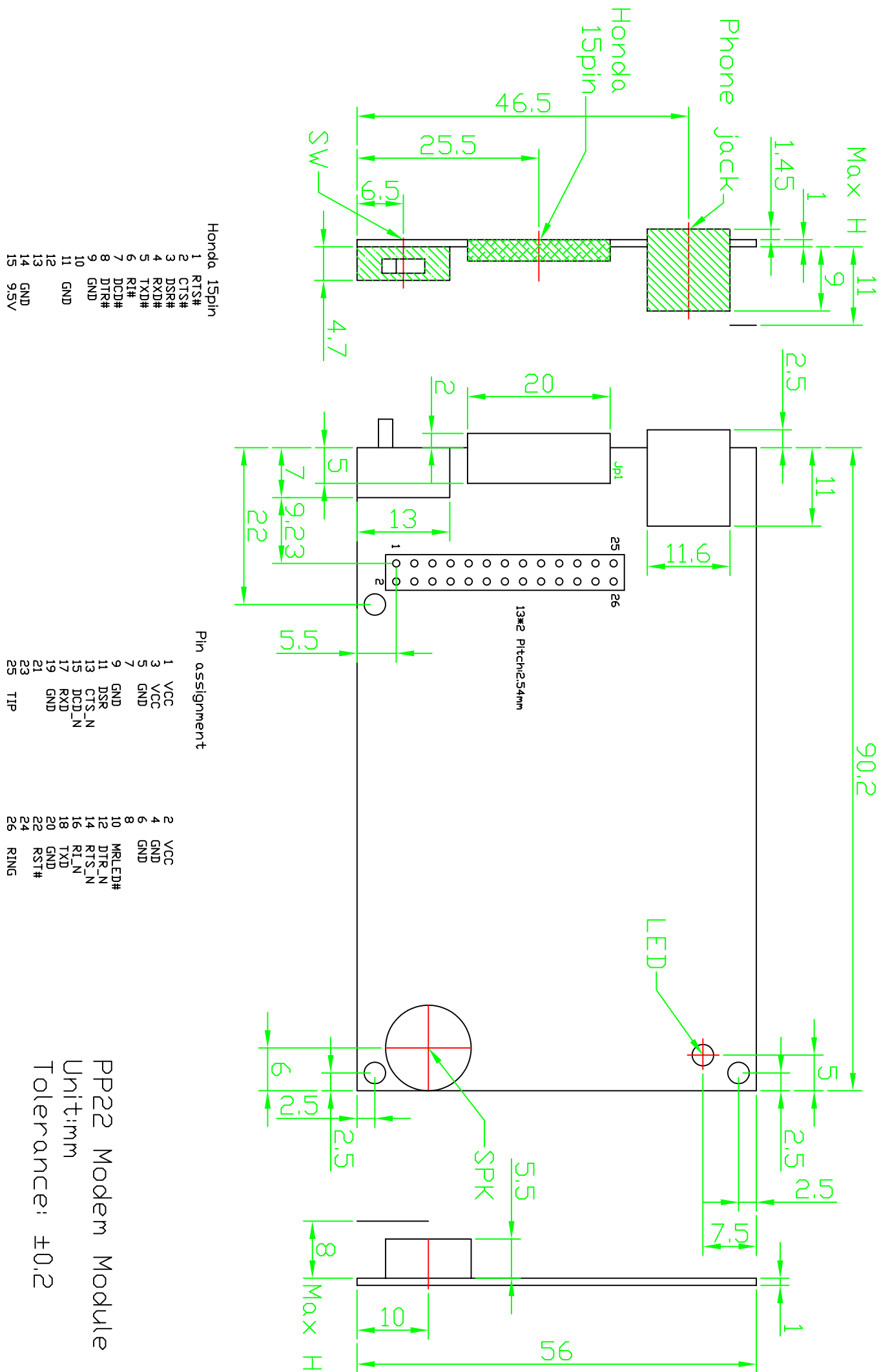
Pin#	Signal	Direction	Function/Comments
1	RTS#	Input	Request To Send. (RS-232 Level)
2	CTS#	Output	Clear To Send. (RS-232 Level).
3	DSR#	Output	Data Set Ready. (RS-232 Level)
4	RXD#	Output	Receive Data (RS-232 Level)
5	TXD#	Input	Transmit Data (RS-232 Level)
6	RI#	Output	Ring Indicator (RS-232 Level)
7	DCD#	Output	Data Carrier Detect. (RS-232 Level)
8	DTR#	Input	Data Terminal Ready. (RS-232 Level)
9	GND	Common	Signal Ground
10	NC		
11	GND	Common	Signal Ground.
12	NC		
13	NC		
14	GND	Common	Signal Ground
15	9.5V	Input	Power Source input DC 9.5V /200mA.

Connector Definition

J1 RS-232 TTL interface

Pin#	Signal	Direction	Funvtion/Comment
1	VCC	Input	Power source DC 5V /200mA
2	VCC	Input	
3	VCC	Input	
4	GND	Common	Signal Ground
5	GND	Common	Signal Ground
6	GND	Common	Signal Ground
7	NC		
8	NC		
9	GND	Common	Signal Ground
10	MRLED#	Output	Modem ready LED output.
11	DSR	Output	Data Set Ready. (RS-232 TTL Level)
12	DTR_N	Input	Data Terminal Ready. (RS-232 TTL Level)
13	CTS_N	Output	Clear To Send. (RS-232 TTL Level)
14	RTS_N	Input	Request To send. (RS-232 TTL Level).
15	DCD_N	Output	Data Carrier Detect. (RS-232 TTL Level)
16	RI_N	Output	Ring Indictor. (RS-232 TTL Level).
17	RXD	Output	Receive Data. (RS-232 TTL Level)
18	TXD	Input	Transmit Data. (RS-232 TTL Level)
19	GND	Common	Signal Ground.
20	GND	Common	Signal Ground.
21	NC		
22	RST#	Input	Reset Low active.
23	NC		
24	NC		
25	TIP	Bi-Direc.	Phone Line
26	RING	Bi-Direc.	Phone Line.

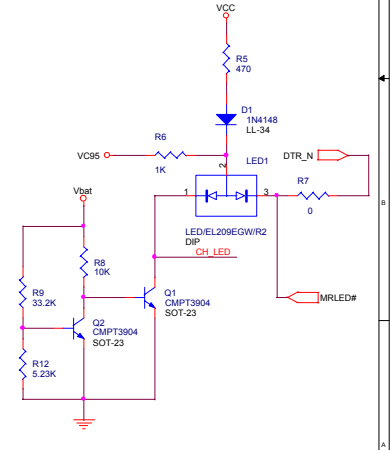
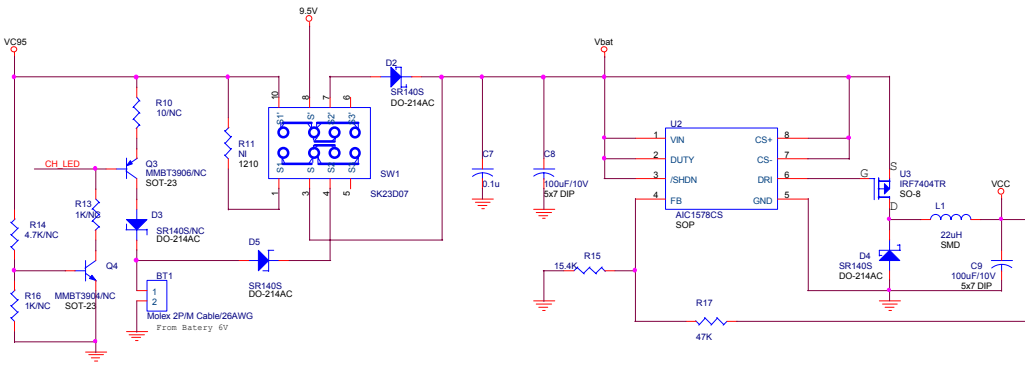
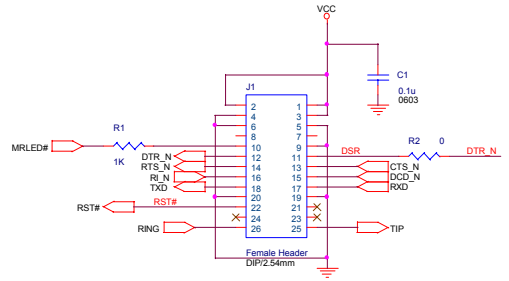
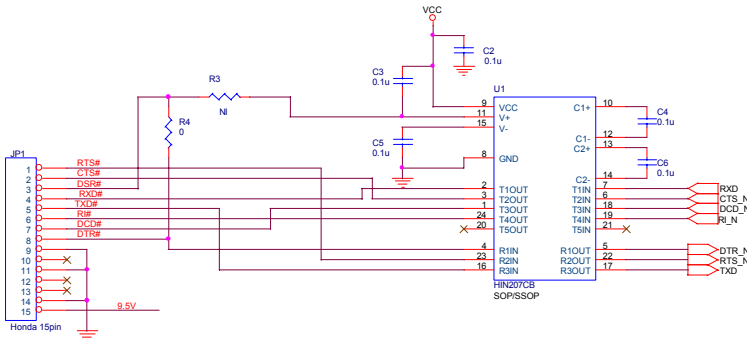




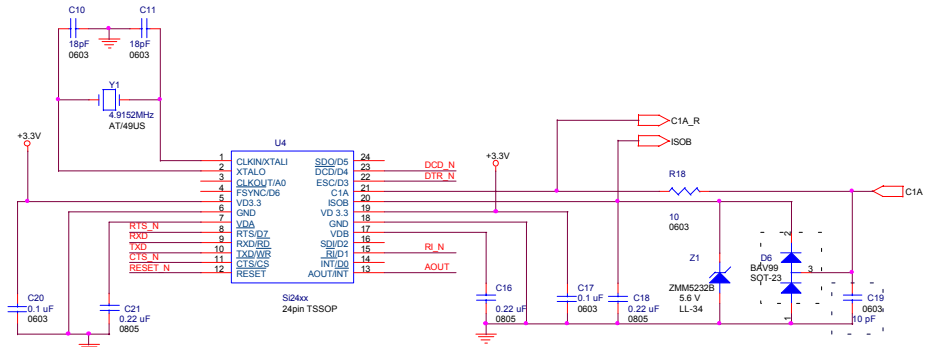
PP22 Modem Module

Unit:mm

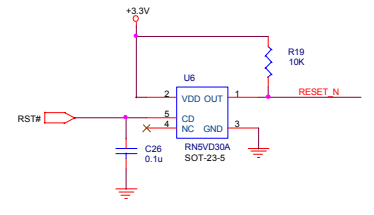
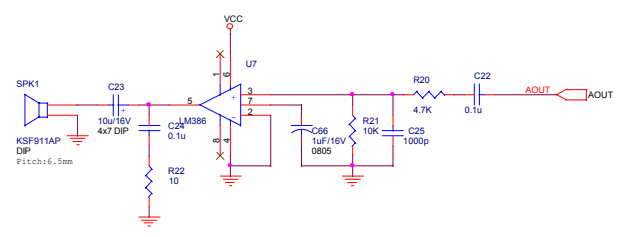
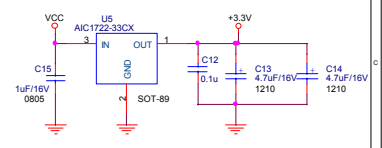
Tolerance: ±0.2



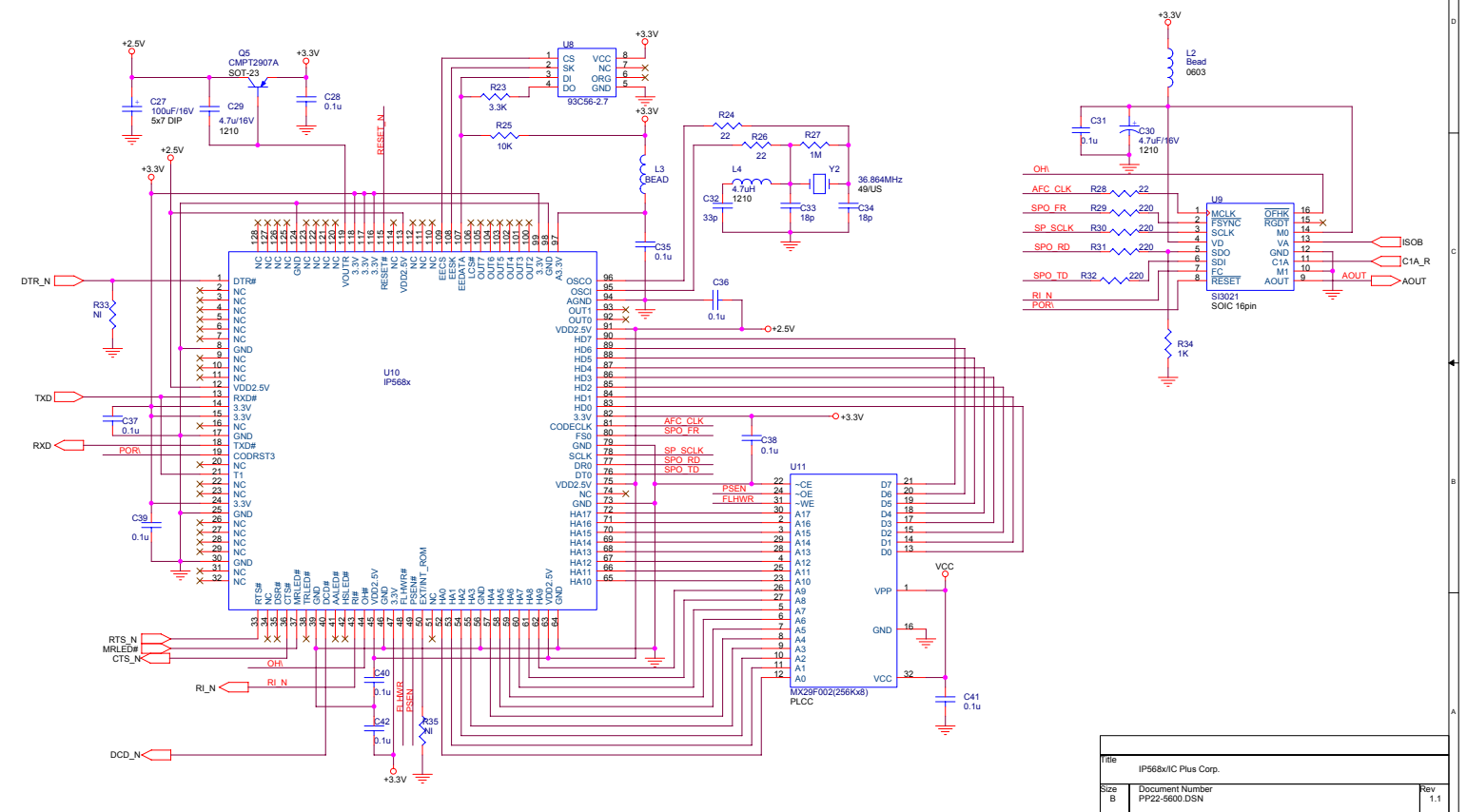
Title			PP22(T)-5600/AC61 (3280.ZIP)
Size	Document Number	Rev	
B	PP22-5600.DSN	1.1	
Date	Thursday, March 28, 2002	Sheet	1 of 4



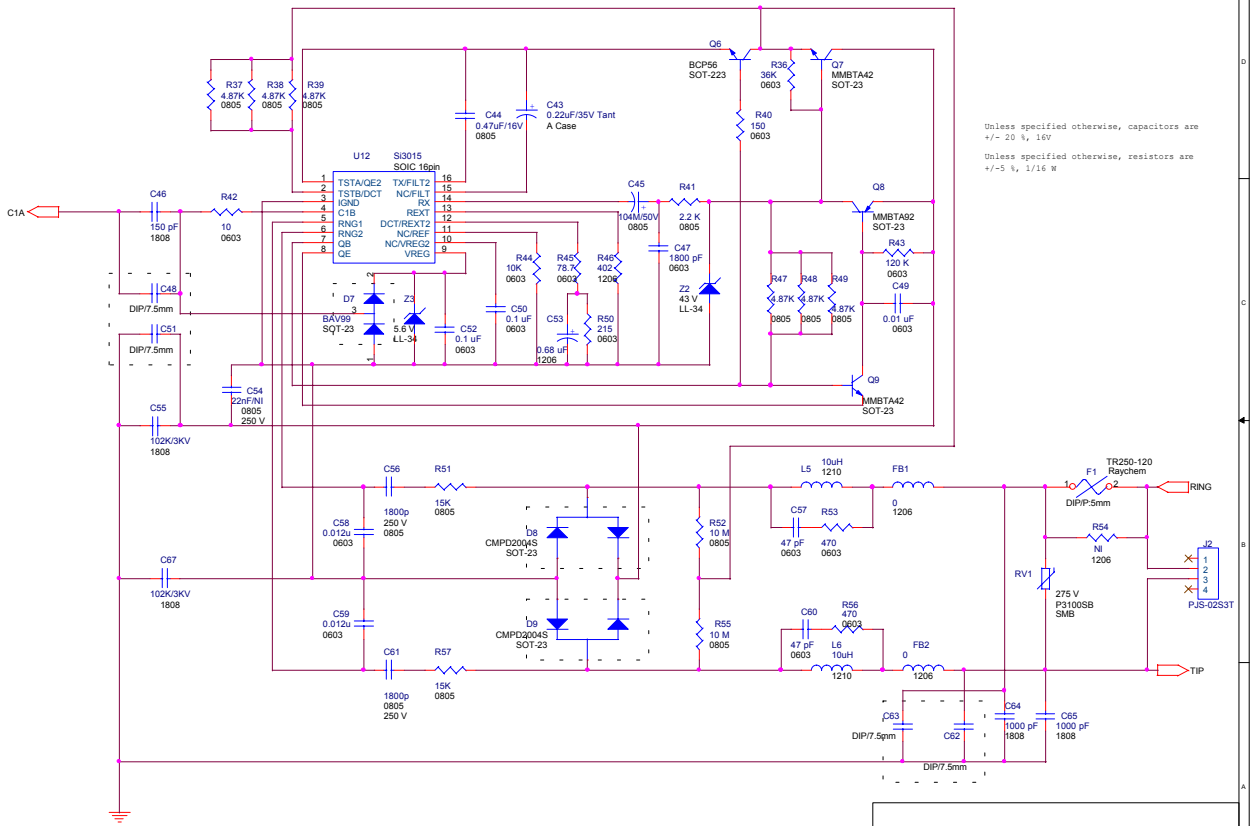
C19 may be used for reducing emissions.



Title		
Si24xx Connector		
Size	Document Number	Rev
B	PP22-5600.DSN	1.1
Date	Thursday, March 28, 2002	Sheet 2 of 4



Title		
IP68x/iC Plus Corp.		
Size	Document Number	Rev
B	PP22-5600.DSN	1.1
Date	Thursday, March 25, 2002	Sheet 3 of 4



Title		DAA
Size	Document Number	Rev
B	PP22-5600.DSN	1.1
Date	Thursday, March 28, 2002	Sheet 4 of 4