

Quick Installation Guide for 3G/GPS Camera

1. 3G/GPS Camera Packing List :

Before you start installing 3G/GPS Camera, please verify that the package contains the following items:

- 1x 3G/GPS Camera
- 1x 3G Antenna
- 1x External GPS Antenna (Optional)
- 1x 12V/1A Adapter with Micro USB Connector
- 1x Mini USB Interface AV Cable with the Headset and Camera
- 1x 2G SD Card
- 1x CD with Demo Application Program and 3G/GPS Camera User's Guide
- This Quick Installation Guide



NOTE: Please notify your sales representative immediately if any items listed above is missing or damaged.

2. Hardware Connection Settings for 3G/GPS Camera

- 1) Use an AV cable to connect to the mini USB connector of 3G/GPS Camera.
- 2) Screw the HSUPA antenna to 3G ANT SMA connector on your 3G/GPS Camera.
- 3) Make sure the SIM card and SD card has inserted respectively to the SIM card slot and SD card slot of 3G/GPS Camera (For their correct positions, please refer to the figure 2), and the modem is ready as well.

(Note: Make sure PIN code for SIM card has been disabled via your cell phone.)

- 4) Connect the power cable to the micro USB power connector of your 3G/GPS Camera.
- 5) Press the "Push to Link" button (see the red arrow of the figure 2) to power on your 3G/GPS Camera.
- 6) Insert CD to your PC to install the 3G/GPS Camera AP. (Refer to Section 4.)



NOTE 1 : The procedures of powering on 3G/GPS Camera will take 1 minute around. And also make sure that 3G/GPS Camera has been charged for 4 hrs in your first use.



NOTE 2 : 3G/GPS Camera will allow the image and voice on the spot to be remotely transmitted to PC/server running 3G/GPS Camera AP by pressing the "Push to Link" button while 3G/GPS Camera is powering on. And keep pressing the "Push to Link" button over 3 seconds, 3G/GPS Camera will be powered off.

3. LED Description on 3G/GPS Camera



Fig. 1 LEDs on 3G/GPS Camera

LED	Color	Status
3G Modem LED	Green	Flash when the data is transmitting in 3G networks. Lit when no data is transmitting in 3G networks.
2G Modem LED	Red	Flash along with 3G modem LED when the data is transmitting in 2G networks. Lit along with 3G modem LED when no data is transmitting in 2G networks. Lit signally when the error (such as no detection of the SIM card or network failure) occurs.
GPS LED	Green	Flash when GPS location is detected. Lit when no GPS location is detected.
SD Card Status LED	Red	Lit when no space of the SD card is left. Off when the space of the SD card still remains.
Recording Status LED	Red	Lit when the device is doing recording. Off when the device stops recording.
Cellular Signal Strength LED	Green	Lit when the signal strength is good. Flash when the signal strength is moderate. Off when the signal strength is weak.
System Operation Status LED	Green	Flash per second when the device is turned on whether the power adapter exists or not.
		Lit when the device is being charged in case the power adapter exists.
		Off when the device is fully charged in case the power adapter exists. Off when the device is turned off in case no power adapter exists.

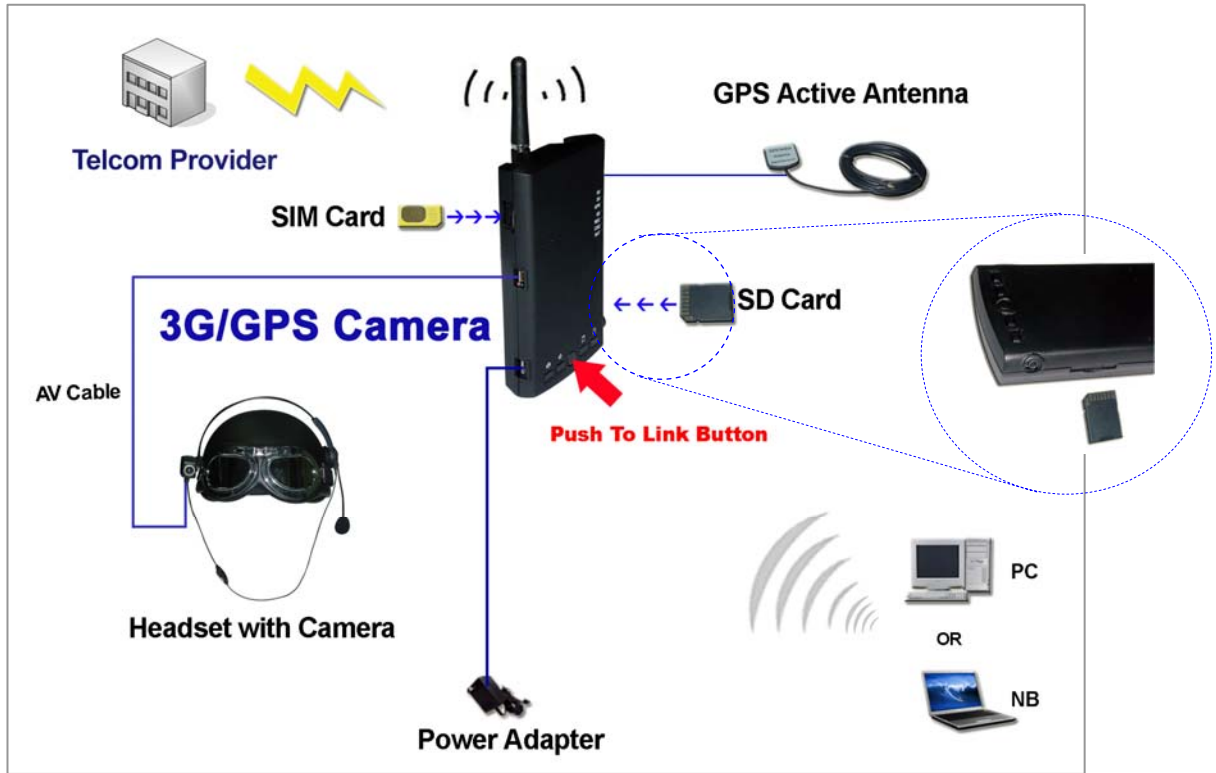
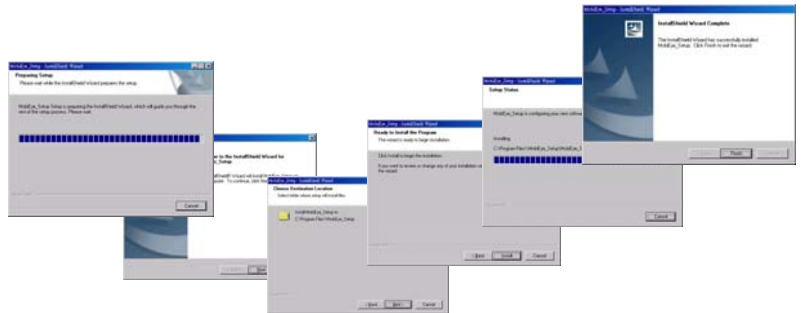


Fig. 2 The Connection of 3G/GPS Camera

4. Install the 3G/GPS Camera AP Software

- 1) To install 3G/GPS Camera AP to your PC for 3G/GPS cameras, please insert CD and double click the **3G_Camera_and_Audio.msi** file. Follow the wizard and it can be found on Start Menu if the installation succeeds.



▪ Viewing Image from Cameras/ Making VoIP Phone Calls/ Doing MAP Searching via GPS

- 1) Please start the 3G/GPS Camera AP software you installed, and 3G/GPS Camera will automatically show up on Camera List if your 3G/GPS Camera's basic settings and dialup connection settings are completed. (For more details about these settings, please refer to Section 3.1.1 and 3.1.2 of 3G/GPS Camera user's manual.)
- 2) To view the camera, click on the checkbox in front of the ID belonging to your desired 3G/GPS Camera, and the image window will pop up at the section below the camera list.
- 3) To make a VoIP phone call, just right click on the desired entry of 3G/GPS Camera on the camera list and select the **Dial** function from the pop-up menu.
- 4) To search for your 3G/GPS Camera's position, please install the GPS AP we offer in advance. Execute the **Setup MAP** function under the **MAP...** file menu of 3G/GPS Camera AP to locate the **GpsSystem.exe** file of the GPS AP you had installed. Then, enable the **Run MAP** function for the initiation the GPS MAP function.



NOTE 3: The built-in GPS function works only when 3G/GPS Camera is placed in the outdoors. When you power on 3G/GPS Camera, this function will begin to be initiated as well and it will take 15 minutes at least for 3G/GPS Camera to locate its position successfully.